



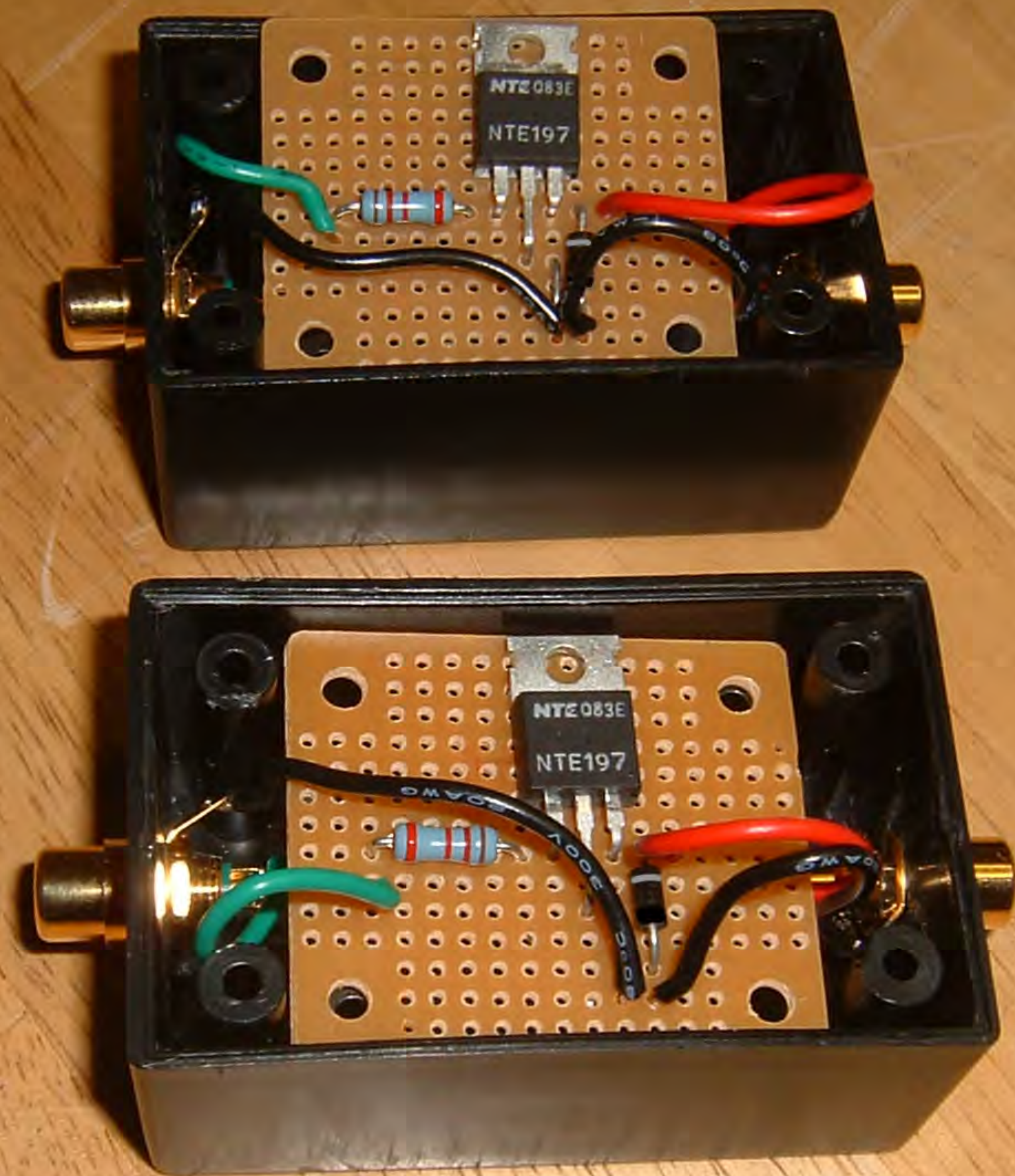
Parts needed for the Amp Control Project
Fully Assembled Units are Available for \$25.00 plus shipping



Box with Hole drilled for RCA Jack



Box with RCA Jacks and input and output wiring installed and black ground wires

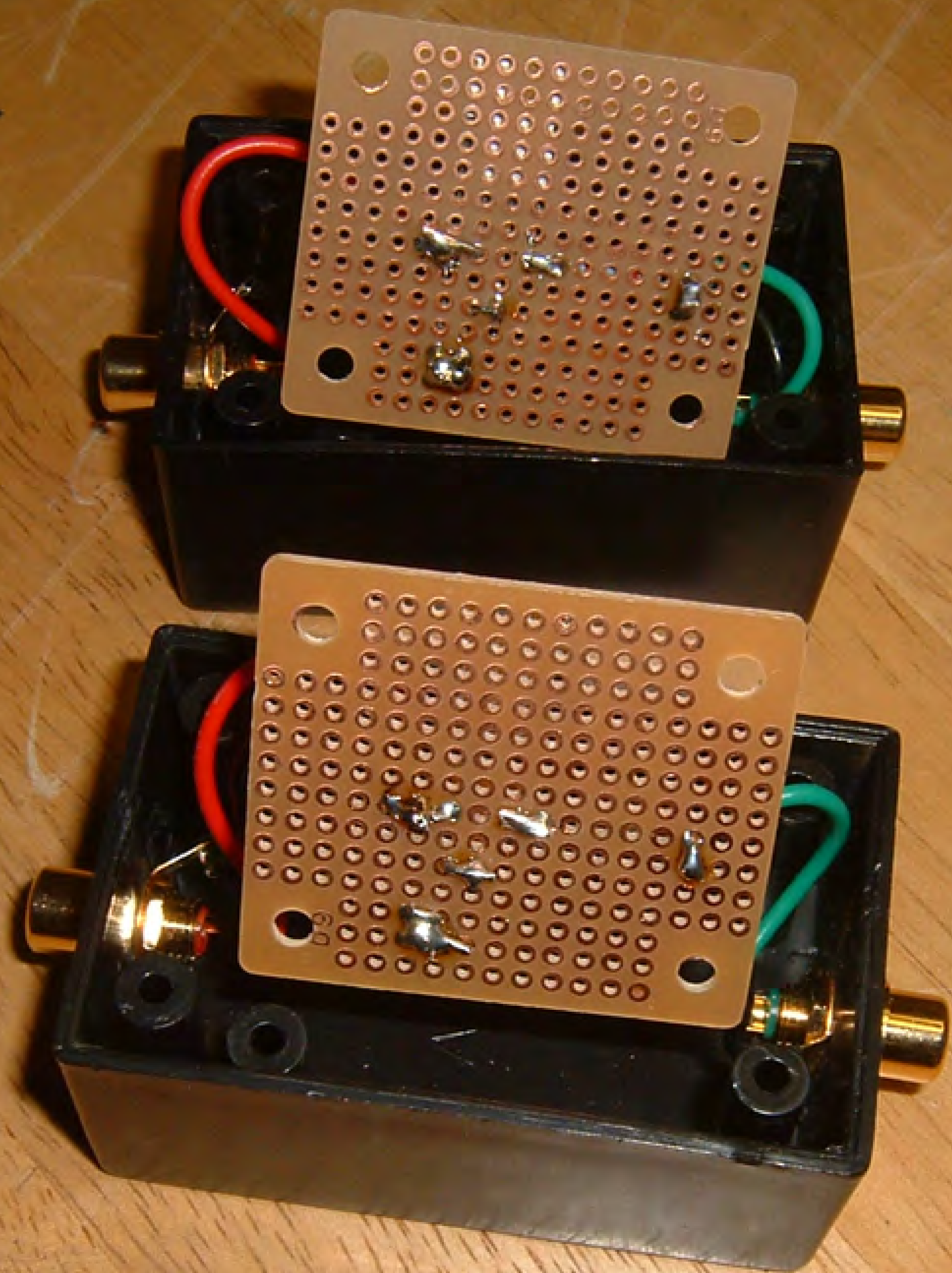


Perf boards wired up with Components installed

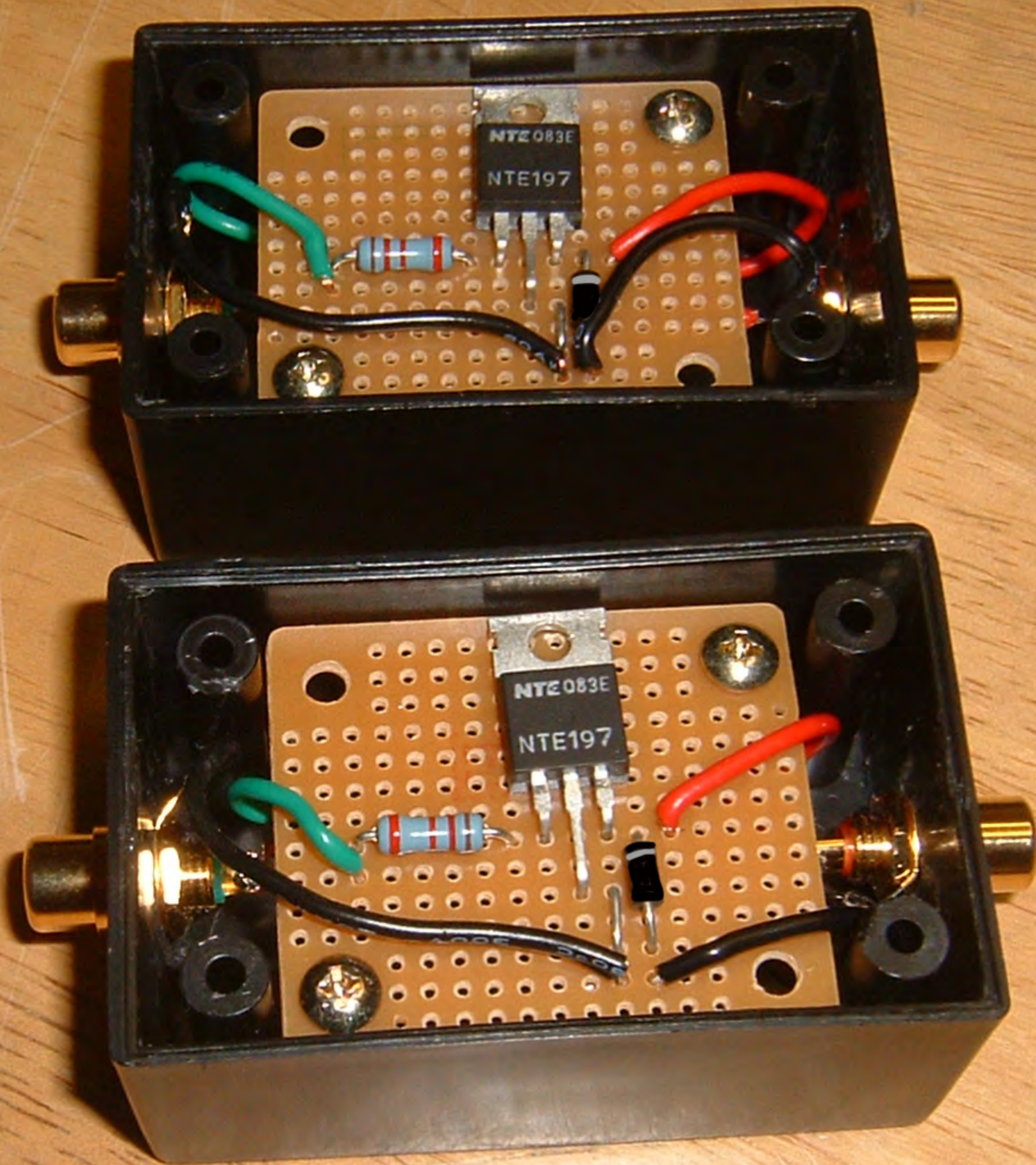
NTE-197 shown is for Amps with less then + 60 volts on TX cable

NTE-37 required for Amps with greater then + 60 volts on TX cable.

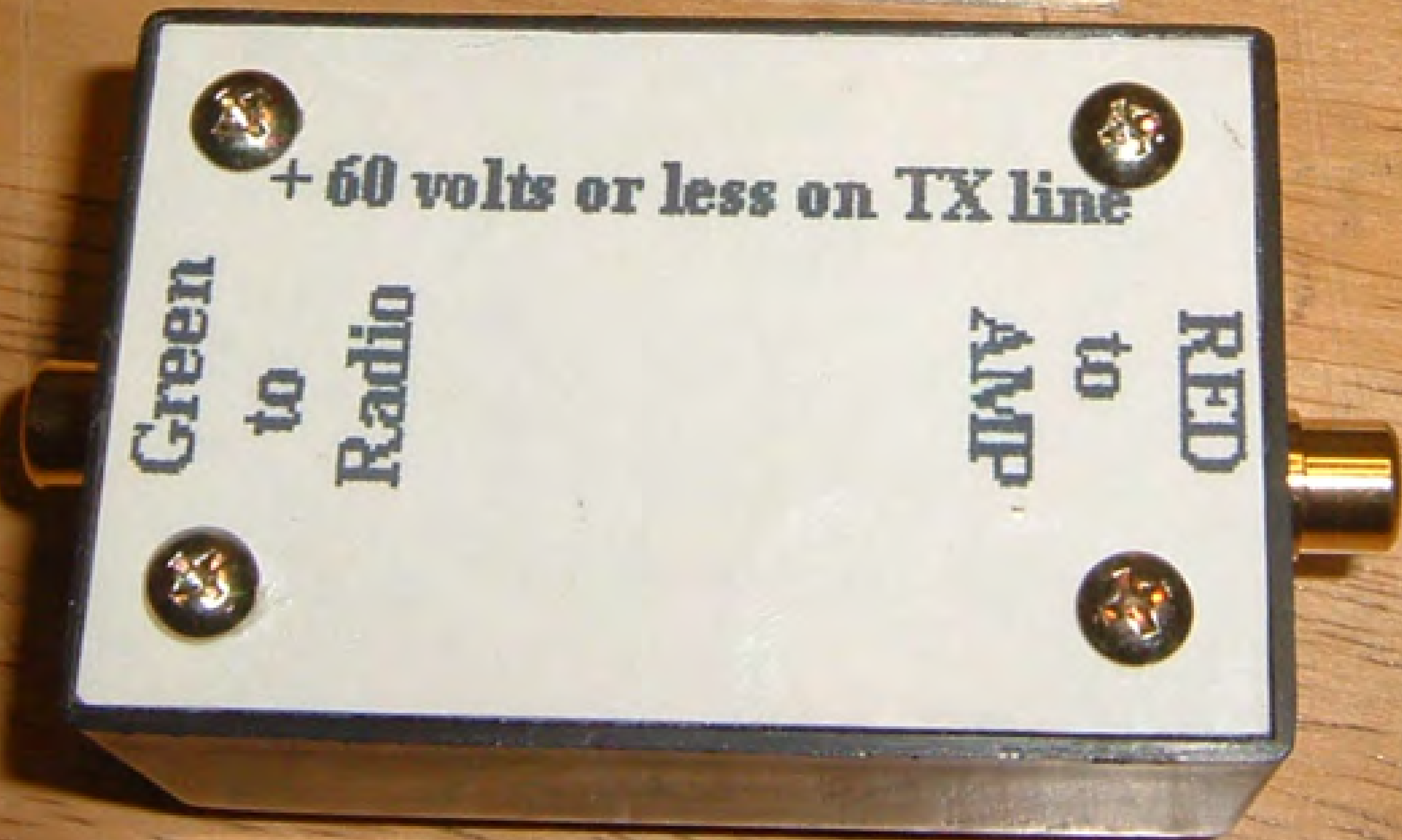
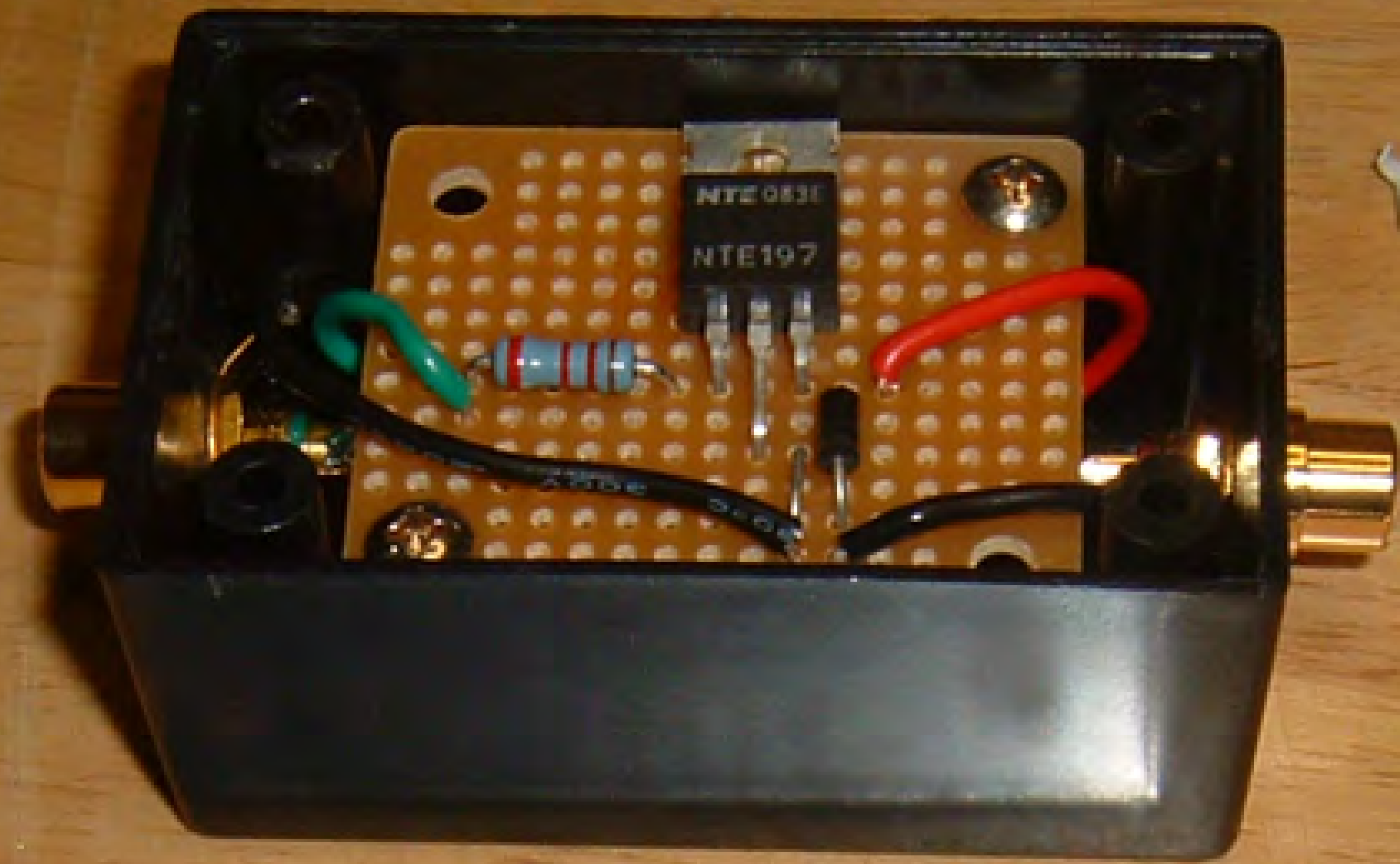
NTE-377 and NTE-36 respectively are required for Amps with - Voltage on TX cable



Underneath view of Perf boards after soldering



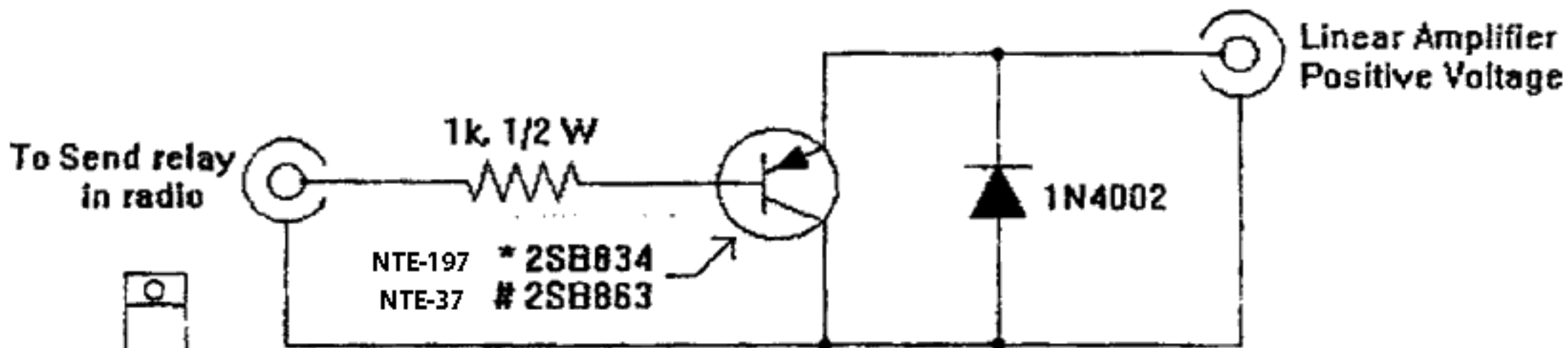
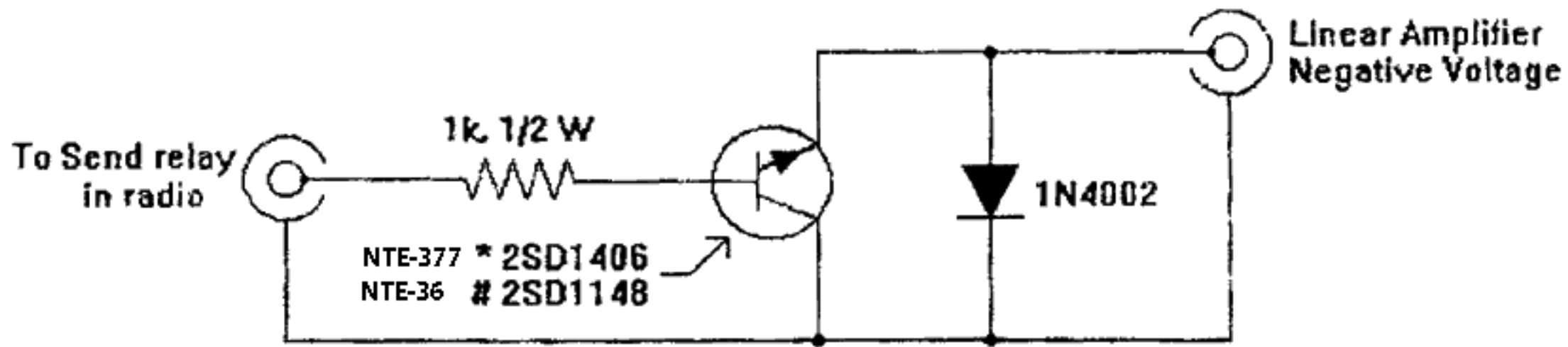
Wired Boards Installed and Mounted





Two External Amp Boxes assembled, labeled and ready to use

External Electronic Amp Control Schematic



* Amp TX line Voltage is under 60 Volts
Amp TX line Voltage is Over 60 Volts